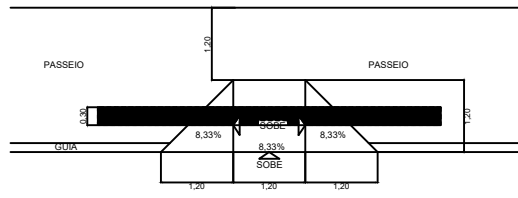
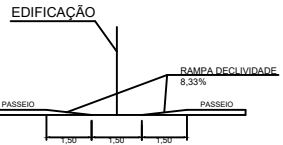


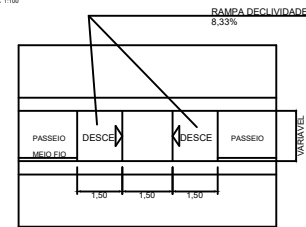
CORTE RAMPa ACESSIBILIDADE (Modelo 02)
ESCALA 1:50



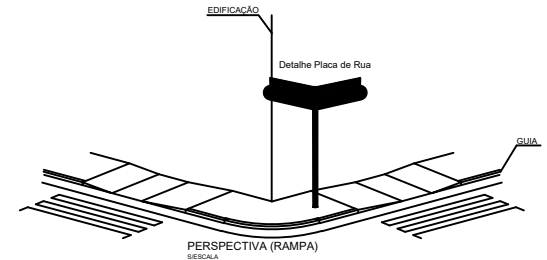
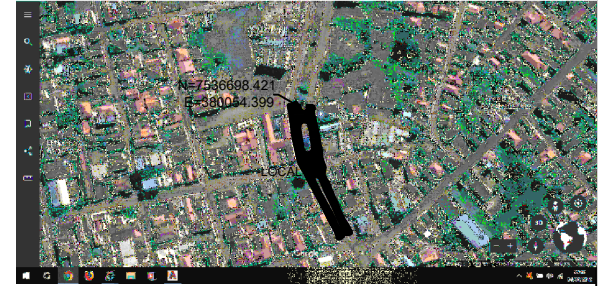
PLANTA RAMPa ACESSIBILIDADE (Modelo 02)
ESCALA 1:50



VISTA ACESSIBILIDADE (Modelo 01)
ESCALA 1:100



PLANTA RAMPa ACESSIBILIDADE (Modelo 01)
ESCALA 1:100



PROJETO ARQUITETÔNICO

FOLHA ÚNICA

PAVIMENTAÇÃO ASFALTICA (CBUQ)

PROP. PREFEITURA MUNICIPAL DE BORDA DA MATA
C B P J 17.912.023/0001-75
LOCAL CENTRO
ENDEREÇO AVENIDA JOÃO OLÍVIO MEGALE
MUNICÍPIO BORDA DA MATA MG
DATA 07/2019

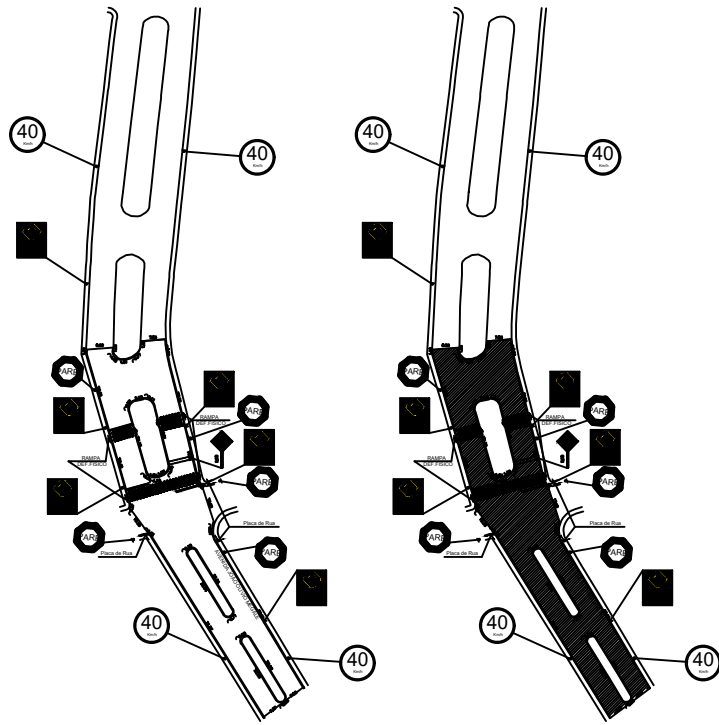
FAIXA DE ROLAMENTO LARGURA VARIÁVEL

COMPRIMENTO LINEAR DA FAIXA DE ROLAMENTO 262,37m.

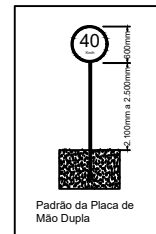
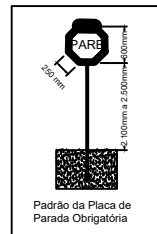
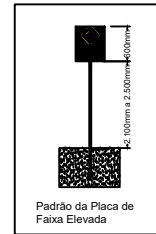
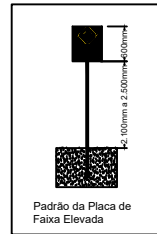
SARJETAS: 0,30m DE CADA LADO

ÁREAS:

FAIXA DE ROLAMENTO = 2.250,00m²
SARJETAS = 435,86m



Planta Planimétrica
ESCALA 1:1000



(m)	AVENIDA JOÃO OLÍVIO MEGALE	TOTAL	COMPRIMENTO LINEAR
	COMPRIMENTO (m)		
11,34	48,03	14,77	
23,61	7,68	13,86	
44,26	2,80		
	Comprimeto Total	262,37	262,37
	LARGURA Variável		
	ÁREA (m²) TOTAL FAIXA ROLAMENTO (m²)	2.250,00	
	SARJETAS (m) TOTAL SARJETAS (m)		
0,59	0,59		
2,42	2,42		
6,81	6,81		
66,95	66,95		
69,42	69,42		
1,26	1,26		
1,37	1,37		
26,40	26,40		
28,00	28,00		
1,30	1,30		
1,22	1,22		
4,63	4,63		
1,08	1,08		
7,77	7,77		
4,89	4,89		
2,63	2,63		
5,11	5,11		
19,83	19,83		
4,66	4,66		
1,53	1,53		
1,09	1,09		
2,31	2,31		
31,28	31,28		
5,76	5,76		
5,71	5,71		
20,04	20,04		
5,73	5,73		
22,06	22,06		
5,65	5,65		
22,60	22,60		
	Comprimeto Total	433,23	433,23